



ANNUAL REPORT 2018-2019

Transitions of PA

Email: admin@transitionsofpa.org

Website: www.transitionsofpa.org

Hotline: 1-800-850-7948

P.O. Box 170 Lewisburg, PA 17837

transitions
SAFER FAMILIES. SAFER COMMUNITIES.

TABLE OF CONTENTS

<i>About Transitions of PA</i> _____	2
<i>Message from the CEO</i> _____	3
<i>Program Highlights</i> _____	4
<i>Accomplishments</i> _____	5



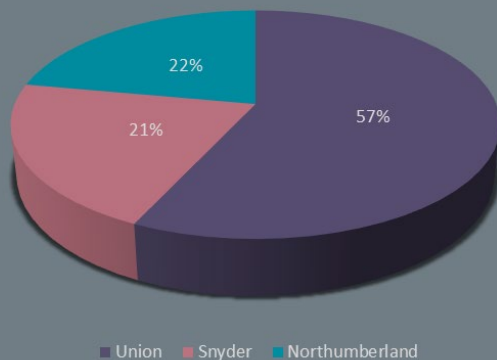
Who We Are

Transitions of PA provides free, confidential, and trauma-informed victim services in Union, Snyder, and Northumberland Counties.

Our Mission

Transitions of PA is a crisis center that provides advocacy, empowerment, and education to victims, survivors, families, and communities to end patterns of violence and abuse.

2,834 Clients Served in FY2018-2019



Services

- 24-Hour Crisis Hotline
- Crisis Intervention
- Safe House
- Individual Counseling
- Support Group Counseling
- Therapy
- Housing Advocacy
- Legal Advocacy
- Medical Advocacy
- Civil Legal Representation
- Information and Referral
- Outreach
- Prevention Education
- Training to Professionals

MESSAGE FROM THE CEO

In the 2018-2019 fiscal year, Transitions received new funding to expand services to victims. The result is the extension of housing assistance to victims so survivors do not return to abuse. In addition, our concern for children and keeping them from the trauma of domestic violence has led us to opening the Fairl Family Justice Center, a custody exchange and visitation center in Sunbury.



Transitions staff provide two-hour workshops focused on informing professionals about basic physical, mental, and social outcomes of trauma. The goal of Trauma 101 is to increase each participant's knowledge of the impact of trauma as well as learn the basic skills needed to become trauma-sensitive. Transitions has partnered with the 17th Judicial District to begin providing this training to county employees in 2019-2020.

In January 2019, Transitions experienced a second fire at our Northumberland County Safe House in Shamokin, approximately one year after the first fire closed our facility for several months. From donations to offers of housing for guests to extending invitations to utilize office space, our community reminded all of us at Transitions of why the Susquehanna Valley is such an amazing place to live and work. We are looking forward to re-opening our Northumberland County Safe House soon.

We continue to provide comprehensive direct services to victims and survivors of all ages, including trauma-informed therapy. Our professional staff stand ready to serve the needs of all victims and survivors in Union, Snyder, and Northumberland Counties. You will observe from the information contained in this Annual Report that our services are strong and work to keep our community safe and strong.

Sincerely,

Susan K. Mathias

Chief Executive Officer

PROGRAM HIGHLIGHTS

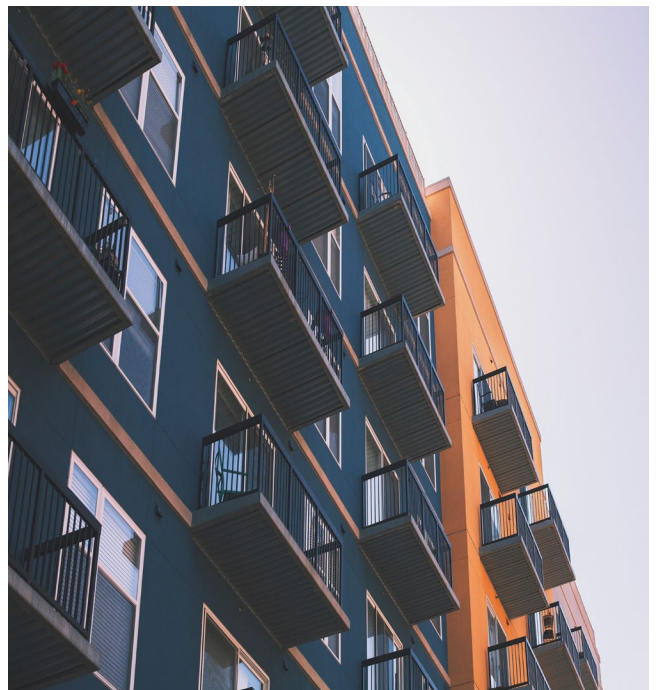


Campus Advocacy

Transitions has partnered with Susquehanna University to provide trauma-informed supportive services to student survivors on campus. Located on the lower level of the Blough-Weis Library, Transitions has private office space in the Violence, Intervention and Prevention (V.I.P.) Center to offer resources and confidential counseling to students.

Fair Family Justice Center - In April 2019, Transitions was awarded a Victims of Crime Act (VOCA) grant to develop and implement a supervised visitation and custody exchange center to serve Union, Snyder, and Northumberland Counties. The Fair Family Justice Center will protect children and their non-offending parents from further violence, abuse, and threats during exchanges and visitation.

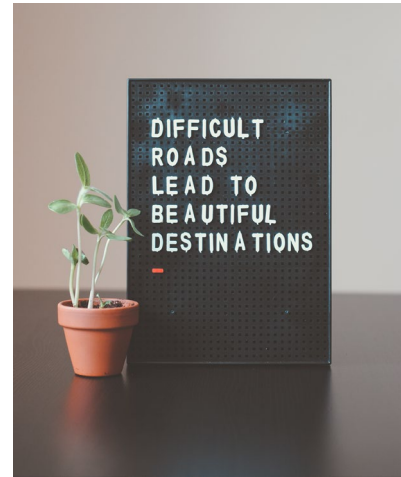
Rapid Rehousing - Transitions continued to provide rental assistance and case management services to victims who are homeless as a result of domestic violence to attain safe, affordable, and permanent housing without returning to an abusive partner. Additionally, during the fiscal year, Transitions was selected by the Eastern PA Continuum of Care and HUD to provide coordinated entry for the eastern 33 counties in Pennsylvania. Coordinated entry is a process to ensure that all people who are experiencing a housing crisis have fair and equal access to housing and assistance.



Accomplishments

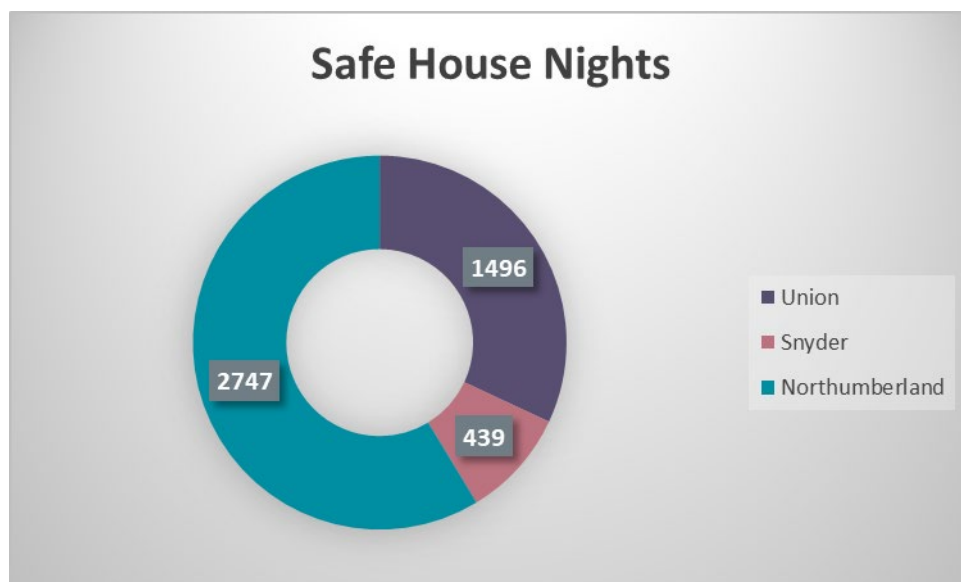
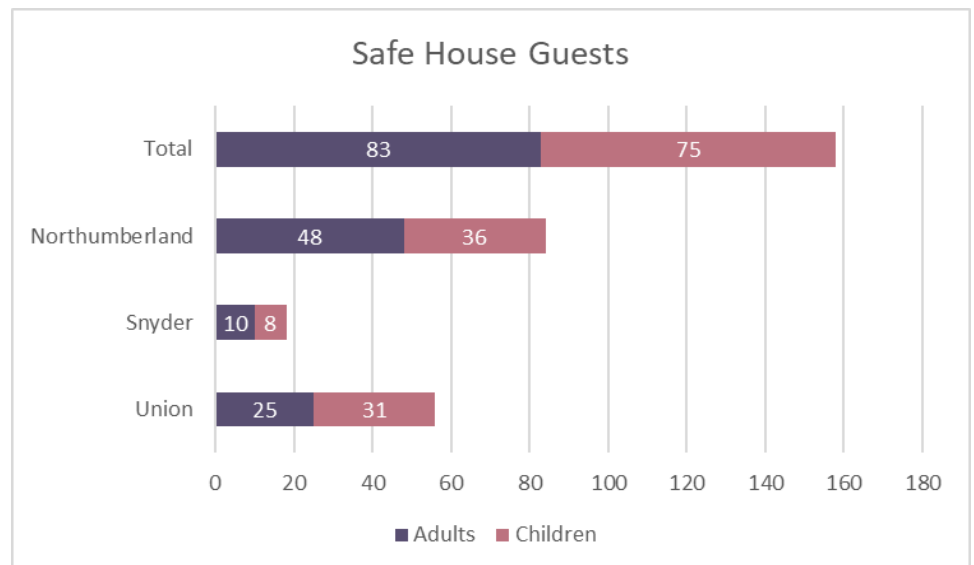
COUNSELING

Our agency provided services to **2,711** adult victims and **123** child victims of domestic violence and sexual assault. Our Counseling Department provided **9,020** hours of counseling to adult and child victims. Transitions crisis workers answered **2,385** hotline calls. During the fiscal year, we added a full-time therapist to our staff to accommodate the demand for trauma-informed counseling.



SHELTER AND HOUSING

Our safe house department provided **4,682** shelter nights to **158** adult and child victims of domestic violence. Our Housing Department provided **131** victims of domestic violence with rental assistance and case management services.



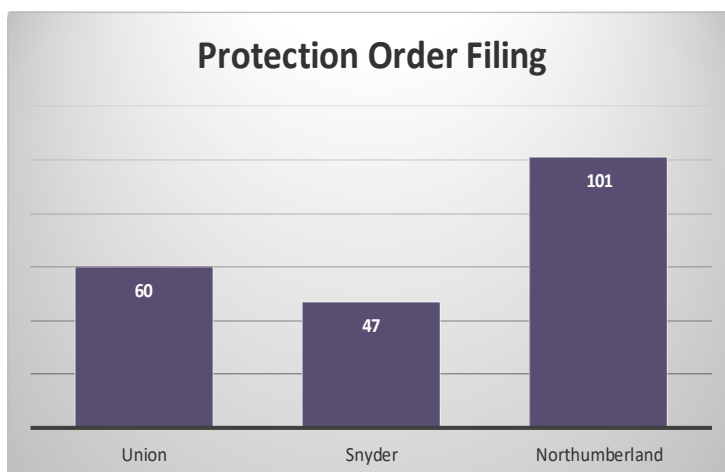
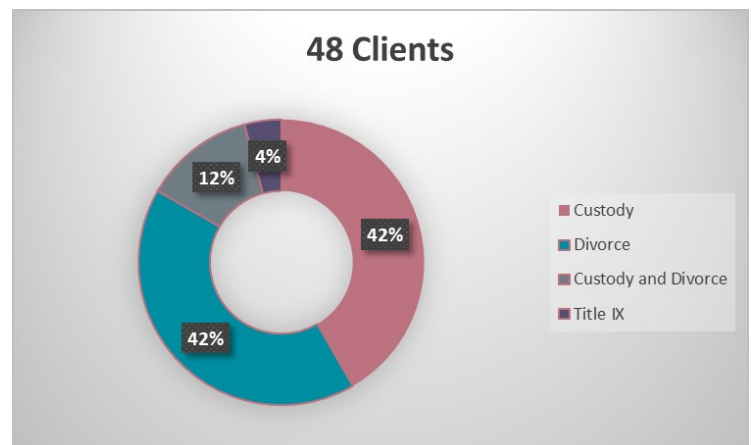
EDUCATION

Transitions Education Department provided 170 prevention education programs to 4,452 students and 105 community awareness activities to 3,977 participants. Due to the demand for prevention and education programming, we added an additional Education Specialist to our team this year.



CIVIL LEGAL REPRESENTATION

Transitions Legal Center provided civil legal representation to 48 victims of domestic violence and sexual assault.



LEGAL ADVOCACY

Legal Advocates assisted 208 individuals file for protection orders against perpetrators of domestic and sexual violence.